

COMPLETE DESIGNATION	985.4.2	/142	/CH620	AER	+	116
MODEL						
DIAMETER IMPELLER (/142 = 142 mm.)						
MOTOR						
STARTING (AE = electric starting, except for the battery and wiring - AR = recoverable starting - AER = electr+recoveral emer. starting)						
OPTIONS (Look at available options)						

M985.4/ multicellular centrifugal motopump with Köhler gasoline engine with elastic coupling

PUMP BODY	Cast iron
TURBINES	Perfectly balanced. In cast iron and available in bronze
DIFFUSERS AND DIFFUSER PLATES	In cast iron and available in bronze
SEALING	High-quality mechanical seal in graphite/silicon/NBR
MOUNTING	On bench with elastic coupling
INLET-OUTLET	SUC G.2 1/2" - IMP G.2 1/2"
MOTOR POWER at 3,600 rpm (NB) kW/HP	13,4/18
STANDARD FUEL TANK	N.D.
FUEL PUMP	Mechanical
RECOMENDED BATTERY	12V - 44 A/h (400 cca)
MOTOPUMP WEIGHT KG.	120
PUMP WEIGHT KG.	43

MAIN FEATURES:

Extremely sturdy construction.

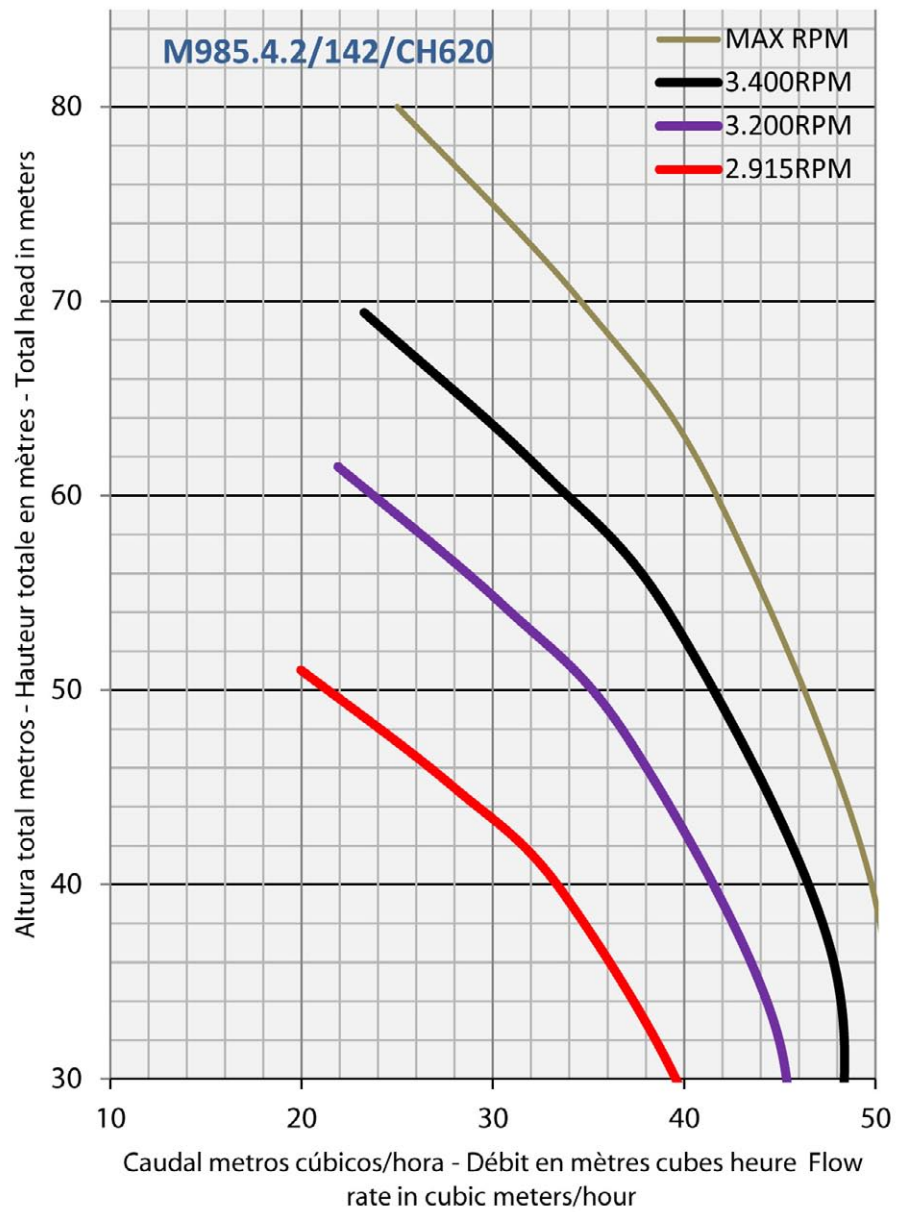
12V Electric starting (except for the battery and wiring) + Recoverable emergency starting.

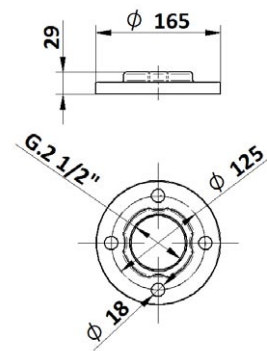
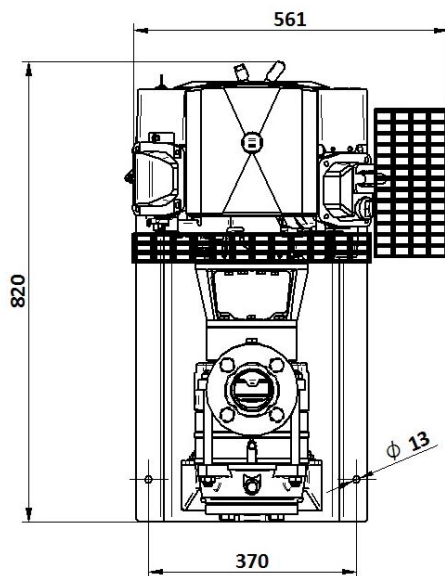
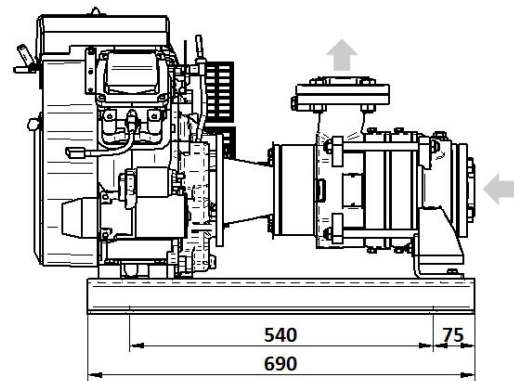
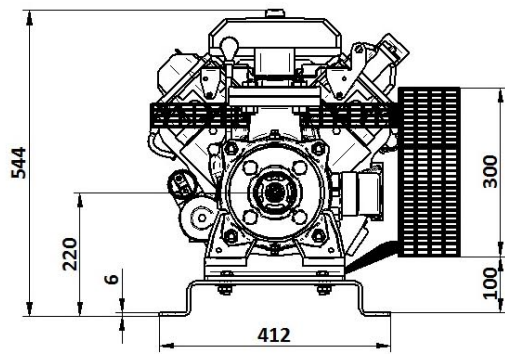


M985.4.2/142/CH620

STATIONARY MOTOR PUMP ELECTRIC STARTING, EXCEPT FOR BATTERY AND WIRING

		AER	
142/CH620		*	
ADD. OPT.	116	Mechanical sealing in silicon/silicon/NBR	*
	128	Cells in bronze (Turbine, diffuser and diffusor plate)	*
		Different positions for exhaust	*



GASOLINA M985.4.2/142/CH620 dimensions


SUC. - IMP. FLANGE